



## Bag Palletizer

**Schneider offers Bag Palletizers** for single and multi-line systems. These economical and flexible solutions provide consistent, well packed pallet patterns that increase line throughput and reduce product damage associated with manual handling.

**Up to 30 Picks Per Minute**

**Fast Pallet Exchange**

**Customized End Of Arm Tooling (EOAT) specifically designed to handle products reliably**

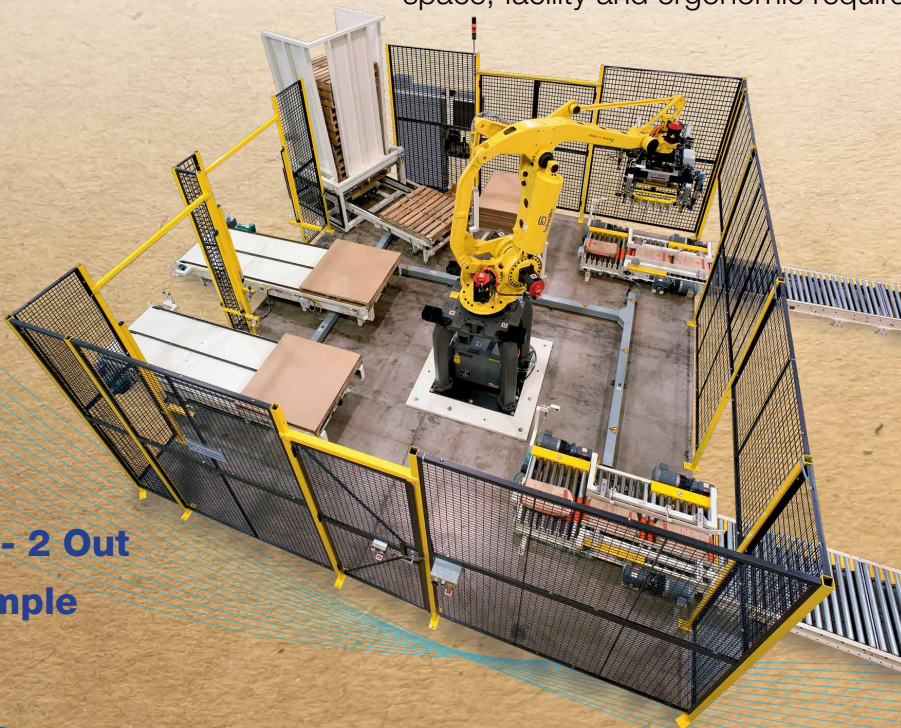
**Flexible Work Cells**

**Multiple products per pick** combined with up to 30 picks per minute enable high throughput.

**The optional over/under conveyor** allows pallet exchange while operating for continuous production.

**End Of Arm Tooling (EOAT) Options** include vacuum, mechanical, fork or a combination of these with or without pallet hooks and slip sheet handling

**A wide range of work cell configurations** are available to handle single and multiple lines to accommodate your floor space, facility and ergonomic requirements.



**2 In - 2 Out Example**



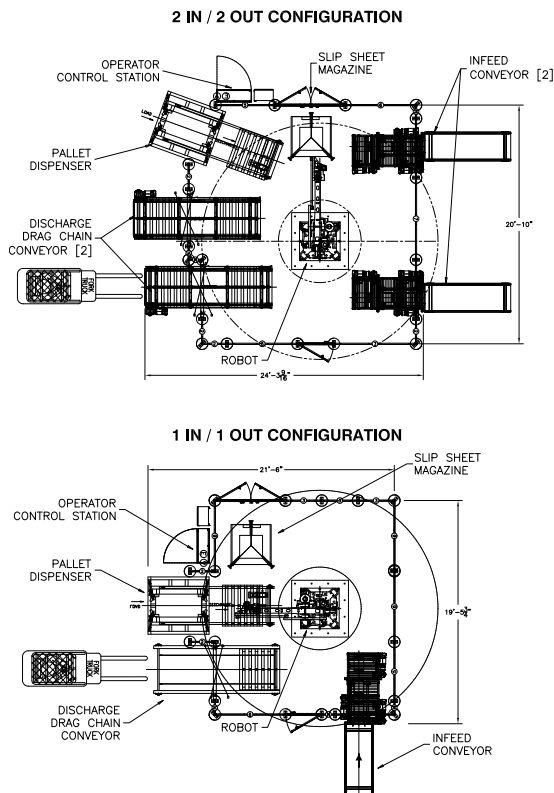
## Operation Summary:

Schneider bag palletizers utilize a robot with an end of arm tool (EOAT) to build a unit load. An empty pallet enters the cell. A pallet dispenser or magazine can be utilized. The pallet is then transferred onto the load station by the robot.

Product is transported to the robotic cell by the case infeed conveyor(s). Once sufficient product and an empty pallet are available, the robot will pick product from the infeed and place it onto the appropriate pallet in the appropriate pallet pattern. Slip sheets are placed as required from the slip sheet magazine. Once a unit load is completed, it is discharged. In the meantime, another empty pallet has been transferred onto the load station and the robot can continue to palletize. The process repeats.

## Typical Equipment Layout

## 1 In / 1 Out Application



## Integration Options

Stretch Wrapper

Product and Pallet Labeling

Conveyors, Shuttle Cars and Automated Guided Carts

Pallet & Slip Sheet Dispenser or Magazine

## SPECIFICATIONS

### Product Types:

Paper, poly, or burlap style bags

### Pallet Type:

GMA, CHEP, Metric

### End of Arm Tooling (EOAT):

Fork, vacuum or gripper or a combination (determined by product)

### Visual Display:

Standard: One (1) Allen Bradley 600 Color Touchscreen

### Control Voltage:

24 VDC

### Controller:

PLC microprocessor

### Ambient Temperature:

40° to 85°F (4.4° to 29.4°C)  
Optional AC packages available

### Enclosures and Electrics:

Standard: NEMA 12

### Construction:

Standard: Painted, carbon steel

### Power Requirements:

480 volt, 3 phase

### Safety:

Meets ANSI/PMMA B155.1 safety standards

## OTHER SCHNEIDER END-OF-LINE SOLUTIONS

Horizontal /Vertical Case Packers

Robotic Case Packers

Robotic Palletizers

Multi-Line Systems

Wrapping Equipment

Bundling Equipment

Ancillary Equipment